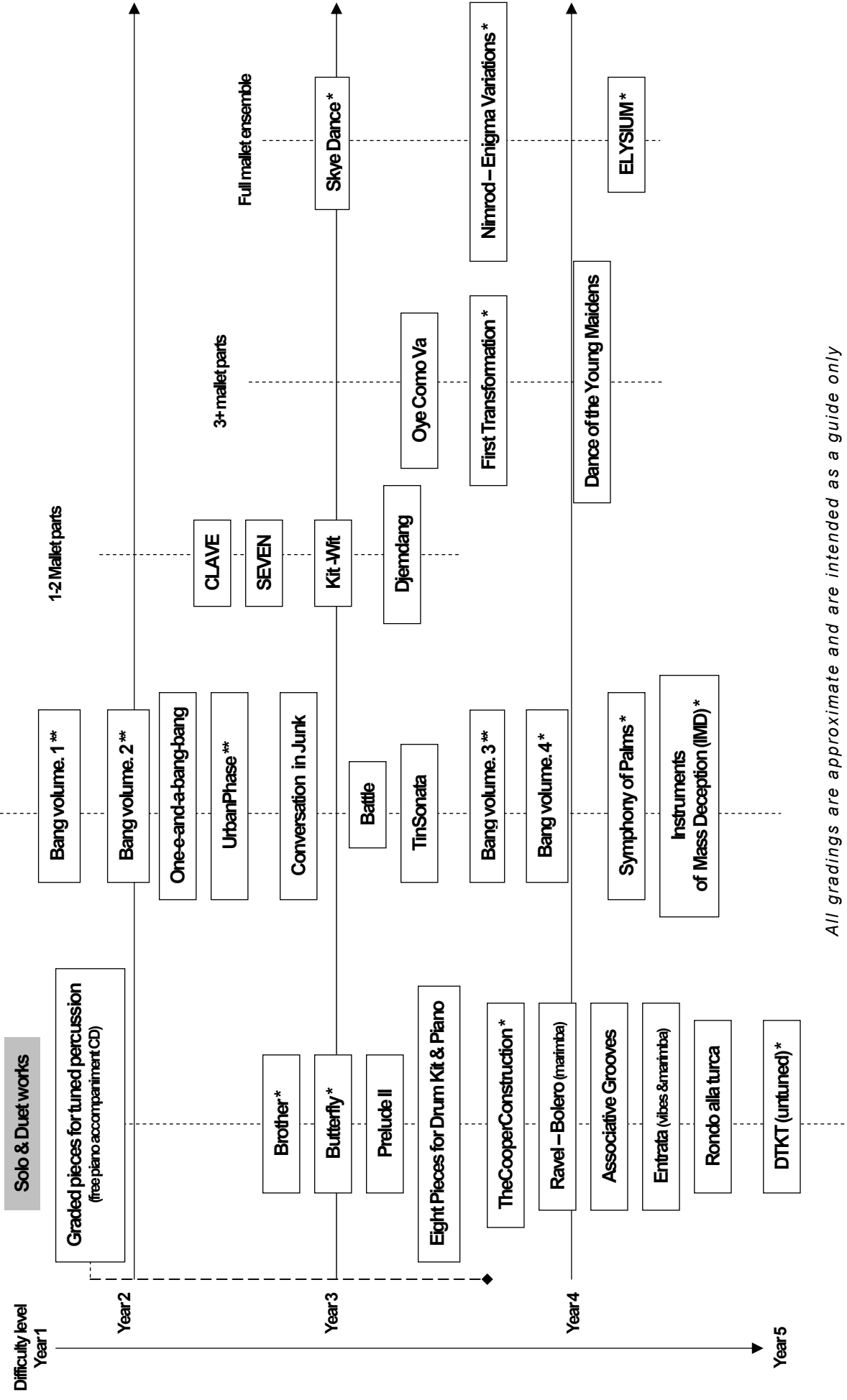


Year – refers to the number of years of tuition  
for Ensemble works – refers to the average across the group

\* a complete recording of this work is available on the **REVOLUTIONS** compact disc. See [www.rhythmscope.com.au](http://www.rhythmscope.com.au)  
\*\* a free complete recording is available on the Rhythmscope demo CD. Contact Rhythmscope for details



All gradings are approximate and are intended as a guide only